

## CERTIFICATIONS

### City of Austin

**MDB:** Minority/Disadvantaged  
Business

### Scope of Services

Plastering

Masonry

Hauling Services

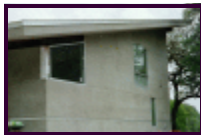
Construction, Remodel

& Alteration

Masonry, Concrete & Stucco  
Maintenance and Repair

Lathing, Plastering

Maintenance & Repair Services



## The Management Team

**Michael Contreras**

Owner

**Gayle Earnhart**

Office Manager

*Absolute Stucco*

### CORPORATE OFFICE

10206 Thaxton Rd  
Austin, TX. 78748

Tel (512) 786-6611  
Fax (512) 243-1103

[admin@absolutestucco.com](mailto:admin@absolutestucco.com)  
[www.absolutestucco.com](http://www.absolutestucco.com)

*Absolute Stucco*

CORPORATE OFFICE  
(512) 786-6611



*High Quality Stucco &  
Exceptional Customer Service*

*Tejas Contractors, Inc.  
Exterior Specialists*

## Services

Absolute Stucco offers a wide variety of High Quality Stucco Services for commercial & residential projects including:

Apartments  
Condominiums  
Town Homes  
Office Buildings  
Custom Homes  
New Homes  
Remodeled Homes



# *The Absolute Stucco Advantage*

## *About Our Company . . .*

*Absolute Stucco* has provided top-quality masonry services to business and individuals in the Austin area for more than 15 years. Our team of contractors specializes in a variety of different services for maintenance, restoration/renovation and new construction projects. **SAFETY is our #1 priority** and we believe that **SAFETY** is achieved through proper planning, training and work-site awareness. All projects are completed using first-rate construction practices to ensure a safe work environment.

Our Stucco System is made with **Portland Sand and Water** and is:

- **Environmentally Safe**
- **Allows for Air Infiltration**
- **Will Outlast the Life of Your Home**
- **Does Not Burn**
- **Is Easily Repaired**

*Absolute Stucco* offers a **Three Coat System** of:

- 1) **Felt Paper** (Weather Resistant Black Paper)
- 2) **Galvanized Metal Lath** (Installed Over Black Paper to Hold Applied Wet Stucco)
- 3) **Three Layers of Stucco** (Scratch Coat, Brown Coat and Finish Coat)

Color can be added to Finish Coat or Painted. Finish Coat can be a variety of textures from a smooth finish to a trowel textured finish.

